

---

# Draft Proposal

---

## Defense Logistics Format / DLF

### An Industry Standard Data Format for the Interchange of Defense Logistics Forms Using XML

Version 0.5

Revision History		
Date	Version	Remarks
12/18/00	0.1	Initial Draft <dd250> developed for ERP industry use
01/15/00	0.2	Incorporated additional line item descriptors for <dd250>
01/23/01	0.3	Incorporated industry improvements to <approval> category
01/29/01	0.4	Definition of <acceptance:cqa> and <acceptance:acceptMeth> brought into conformance with DFARS F-103(21).
03/09/01	0.5	<coversheet:docType> changed to docForm
		<item:suplData> added for non-conformal descriptive information
		"Internal" added as valid value for <shipmentDetails:acceptance/acceptMeth>

# Contents

Introduction .....	3
Overview .....	4
Definition of Tags .....	5
DD250 .....	5
General Document Information .....	5
Category Tag: <coverSheet >.....	6
Shipment Level Information .....	7
Category Tag: <shipmentDetails> .....	8
Item Level Details.....	9
Category Tag: <item>.....	10
Supplemental Item Details.....	12
Internal and Customer Approvals.....	12
Category Tag: <approval>.....	13
Freight Information.....	14
Category Tag: < freightDetails >.....	14
Reusable Tags.....	15
APPENDIX .....	16
Contact .....	16
Industry Review Panel.....	16
Definition of Schema.....	17
Sample DD250 Document.....	24

# Introduction

The Defense Logistics Formats (DLF) XML standard collects together a number of logistics related U.S. Department of Defense forms which share common data and rules of use. The DD Forms represented include:

- DD250 - Material Inspection and Receiving Report
- DD1387 – Military Shipment Label
- DD1659 – Request for Shipping Instructions
- DD1149 – Requisition / Invoice / Shipping Document

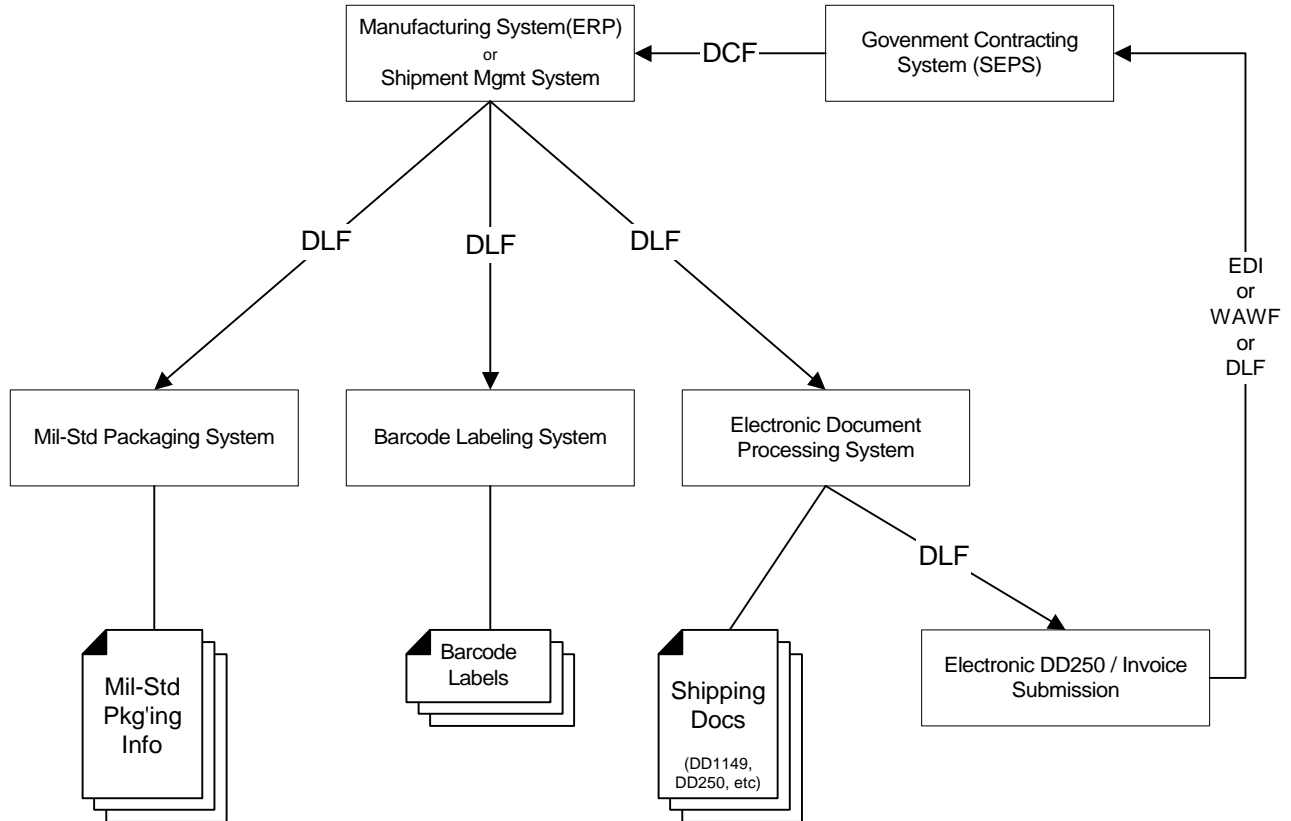
The purpose of this standard is to provide a common interface to the various systems that participate in logistic processes that require the use of these forms. Many people and systems may touch logistics data during the processing of a shipment. The use of XML format standardizes the use of this data in a way that is sufficiently formalized yet less complex than other available standards.

For example, the data for a DD250 might be exported in XML format by an Enterprise Resource Planning (ERP) system, into a form editor for the purpose of adding additional data and printing of paper forms required for shipment. This data might be translated into traditional Electronic Data Interchange (EDI) transactions for submittal to the government for approval. In the future, the XML format itself might be acceptable for submission to the government. Approved transactions could be returned in XML format to the ERP system. Other shipping systems can use the same XML data to generate barcode labels, waybills and other shipping documents.

The DLF standard is designed to complement the proposed Defense Contracting Formats (DCF) standard. The DCF is being developed to use structures that are common to the DLF whenever possible, so that contract data may flow smoothly from the government to the contractor (at time of award) and back to the government at (time of shipment).

The scope of this release of the draft standard is limited to definition of the DD250.

# Overview



The figure above represents a simplified view of the relationship between documents represented by the Defense Contracting Formats (DCF) and the Defense Logistics Formats (DLF). In this view, the government issues a contract using one or more documents in the DCF set. This defines and/or modifies a contract as represented in a database managed by an Enterprise Resource Planning (ERP) a Contract Shipment Management or other business system.

The contract management system issues data as defined by the DCF to electronic document processors, barcode labeling and packaging requirements systems. Together these systems produce the required labels, packaging instructions and shipping documents required for each shipment. The document processing system may go even further, massaging the contract shipment data into a format that may be transmitted to the government for electronic approval of the shipment via Wide-Area Workflow, traditional EDI, or the same DLF format italicizing electronic signature capability.

# Definition of Tags

## DD250

This is the parent tag for the DD250 Material Inspection and Receiving Report. It includes five category tags, the first of which provides routing information. The middle three represent the body of the standard DD250 form. The final tag allows approvals to be attached

The five category tags are:

- Cover Sheet - descriptive information about the form and its current status, routing information and notes entered by users at various stages in the workflow.
- Shipment Details – includes addressing information, shipment and invoice numbers and other top-level data.
- Items – repeats for each line item shipped, providing identification for each one, and including the quantity shipped.
- Freight Details – describes the method of shipment, including tracking numbers, package dimensions and freight charges
- Approvals – are attached by one or more of people approving the document.

The following tables define each tag. The tags in **bold** are required. Some tags may include **required** parameters. Default values of parameters are in italics. Tags marked with a plus sign (+) can be repeated

## General Document Information

The coverSheet tag holds descriptive, routing and other workflow information that does not actually appear on the form as formally used. This tag appears once per document.

```
<dd250>  
= <coverSheet refNumber="TEST-XMLDD250-05" docForm="DD250"  
docStatus="New" salesOrder="DLA900-01-A-TEST-M237"  
sequence="MPT0002" docVersion="2.0" author="D Johnson"  
date="12/08/2000" status="Approved">  
<returnAddress>DJohnson@milpac.com</returnAddress>  
= <copyTo mustApprove="No">
```

```

<emailAddress name="Lynn Carter">
  LCarter@milpac.com</emailAddress>
</copyTo>
- <copyTo mustApprove="No">
  <emailAddress>Accts-Recv@milpac.com</emailAddress>
  </copyTo>
- <copyTo mustApprove="No">
  <emailAddress>DD250s-File@milpac.com</emailAddress>
  </copyTo>
<notes noteBy="D Johnson" date="12/11/2000">This is a sample
  DD250 document created by DD-FormStation.</notes>
<notes noteBy="G Tsiknas" date="12/11/2000">This is an XML
  representation of a sample DD250 using Mil-Pac's
  proposed schema for interchange of DD250
  documents.</notes>
</coverSheet>

```

Category Tag: <coverSheet >

Tag	Parameters	Valid Values	Purpose
<coverSheet>	refNumber		Unique identification of this document
	docForm		Application specific edit form ID
	docStatus	New, Correction	First submission of shipment data Correction to previously new submission
	docVersion	2.0	Identifies data usage as per this standard
	salesOrder		Originator's contract/purchase order number (for internal identification only)
	sequence		Shipment (or other such) number identifying this iteration within the salesOrder
	author		The originator of the document
	date		Date the document was created
	status	Draft <b>InProcess</b> Submitted Approved	Draft version of document for review Additional data is required Document submitted for customer approval Approved by the customer, ready to ship
<returnAddress>	<genericAddress>		Address of original author
<copyTo+>	<genericAddress>		

	mustApprove	Yes, No	
<notes+>			Note attached by <author> or a <copyTo> recipient
	noteBy		Author of the note
	date		Date note was attached

## Shipment Level Information

The **shipmentDetails** tag appears once per document, containing information that applies to the entire shipment, such as contract and shipment numbers, FOB point and shipment method. A feature distinguishing DD250 from a standard commercial shipping form is the amount of address information.

In the example below, the tags marked  $\pm$  have been collapsed to reduce the amount of detail. These sections can be viewed in the Appendix section containing the sample document in its entirety.

```

- <shipmentDetails>
  <contract ordernum="M237">DLA900-01-A-TEST</contract>
  <shipmentNum isFinal="No">MPT0005</shipmentNum>
  <shipDate isEstimated="Yes">2001JAN14</shipDate>
  <invoice invdate="1/14/2001">M01-0023525</invoice>
  <transportMode tcn="V003301007G0123"
    gbl="235255255">5</transportMode>
  <acceptance acceptPoint="S" cqa="S" fob="S"
    acceptMeth="GovtRep" />
- <prime entityCode="1HLD9">
  <orgName subOrg="Network Services Division">
    Mil-Pac Technology</orgName>
  <address subAddress="Suite 227" city="San Diego" state="CA"
    zipcode="92123">
    3914 Murphy Canyon Road</address>
  </prime>
+ <shipFrom entityCode="1HLD9">
+ <shipFrom entityCode="1HLD9">
+ <shipTo entityCode="N00014">
+ <adminOfc entityCode="S0504A">
+ <payOfc entityCode="SC1002">
- <markFor>
  <mfTextLine>Receiving Officer</mfTextLine>
  <mfTextLine>Non-Milstrip</mfTextLine>
  <mfTextLine>TP 3 Rating DOA7</mfTextLine>
  <mfTextLine>ACR: AB</mfTextLine>

```

</markFor>  
</shipmentDetails>

The **shipmentDetail** tag contains six address blocks; prime contractor, shipped from, contract administrative office, contract payment office, ship to location, mark-for information. Each of the address blocks includes an identifying code, referred to as a CAGE and/or DODAAD code. The mark-for information may appear as one of these addresses, or as simply five lines of text identifying the shipment according to the instructions contained in the contract.

**Category Tag: <shipmentDetails>**

Tag	Parameters	Valid Values	Purpose
<contract>			Contract Number (Procurement Instrument Identification Number (PIIN))
	ordernum		Delivery Order (Supplemental PIIN)
	subcontract		The subcontract this shipment is under
<shipmentNum>		per DFARS	Sequential Number assigned to shipment for this contract, from same location
	isFinal	Yes, No	Is this final shipment on contract?
<shipDate>			Date made available for shipment
	isEstimated	Yes, No	Is this an estimated date of shipment?
<invoice>			Invoice Number (optional)
	invdate		Invoice Date (required if invoice used)
<transportMode>		per Mil-Std 129	Mode of Shipment
	tcn		Transportation Control Number
	gbl		Government Bill of Lading
<acceptance>	acceptPoint	S, D	Point where acceptance is made (Source or Destination)
	fob	S, O, D	Free On Board point (Source, Origin, Destination)
	cqa	S, D, N	Contract Quality Assurance inspection at (Source, Destination, NotApplicable)
	acceptMeth	GovtRep FastPay COC EDI WAWF Internal	Acceptance by DCMA representative FastPay Procedures Certificate of Conformance By SEPS via EDI 856 transaction Wide Area Work-Flow transaction No customer acceptance required
< parties>		<prime>	Prime Contractor

		<b>&lt;shipFrom&gt;</b>	Location Shipped From
		<b>&lt;adminOfc&gt;</b>	Contract Administration Office
		<b>&lt;payOfc&gt;</b>	Payment Office
		<b>&lt;shipTo&gt;</b>	Location shipment is made to
		<b>&lt;markFor&gt;</b>	Identification markings on shipment
<b>&lt;prime&gt;</b>		<b>&lt;entity&gt;</b>	Prime Contractor
<b>&lt;shipFrom</b>		<b>&lt;entity &gt;</b>	Location Shipped From
<b>&lt;adminOfc&gt;</b>		<b>&lt;entity &gt;</b>	Contract Administration Office
<b>&lt;payOfc&gt;</b>		<b>&lt;entity&gt;</b>	Payment Office
<b>&lt;shipTo&gt;</b>		<b>&lt;entity &gt;</b>	Location shipment is made to
<b>&lt;markFor&gt;</b>		<b>&lt;entity&gt;</b> or <b>&lt;markForInfo&gt;</b>	Entity/Activity receiving shipment Identification markings on shipment
<b>&lt;markForInfo&gt;</b>		<b>&lt;mfTextLine+&gt;</b>	Up to five(5) repetitions
<b>&lt;mfTextLine&gt;</b>			Plain text identification information

## Item Level Details

An **item** tag appears once for each uniquely identifiable contract line item described in the document.

```

=> < item >
< clin exhibit="A007" > 0001 < /clin >
< noun > WIDGET < /noun >
< nsn > 1112-01-233-4443 < /nsn >
< partNum mfrCage="1HLD9" > WDG-020550-223 < /partNum >
< quantity uoi="EA" > 12 < /quantity >
< unitPrice currency="USD" > 1295 < /unitPrice >
=> < serialNums >
< sn > 223-00003 < /sn >
< sn > 223-00005 < /sn >
< sn > 223-00009 < /sn >
< sn > 223-00012 < /sn >
< serNumRange first="223-00021" last="223-00028" / >
< /serialNums >
< acrn > AB < /acrn >
< milstrip alloc="4" > 23908238289234424 < /milstrip >
< milstrip alloc="8" > 55902352522222421 < /milstrip >
< /item >

```

The amount of data required to describe a line item can be very simple in some cases, limited to a line item number (CLIN), description, National Stock Number and quantity. The example above shows considerably more detail, and serves to demonstrate the mixed mode nature of the XML representation. Notice that the **serialNums** tag includes both individual unit numbers, enclosed in **sn** tags, and a range of serial numbers, going from **223-00021 to 223-00028**.

This type of flexibility is also demonstrated in the use of the optional **alloc** element in the **milstrip** tag. Normally the entire quantity might be allocated to a single MILSTRIP number. In this case, four units are allocated to one, and eight to another.

**Category Tag: <item>**

Tag	Parameters	Valid Values	Purpose
<clin>			Contract Line Item Number (or Sub-CLIN)
	exhibit		Exhibit Item Number
<noun>			Description of item
<nsn>			National Stock Number
	nsnPrefix		NSN Prefix Code
	nsnSuffix		NSN Suffix (Application) Code
<partNum>			Manufacturer's Part Number
	mfrCAGE		CAGE Code of manufacturer
<quantity>			Quantity shipped
	uoi	Per Mil-Std 129	Unit of Issue
<unitPrice>			Price per each <b>uoi</b> quantity
	currency	USD, etc. per ISO 4217	Currency <b>unitPrice</b> is expressed in
<serialNums>	<sn*> or <snRange*>		Serial Number(s) of items
<sn>			Single serial number (repeatable)
<snRange>	<b>first</b>		First serial number in a range
	<b>last</b>		Last " " " " "
<acrn>			Accounting Reference Information
<milstrip>			MILSTRIP number
	alloc		Number of <b>quantity</b> allocated to this number. If not provided, the MILSTRIP is

Defense Logistics Format  
(DLF)

			applied to entire <b>quantity</b> .
<suplData>			Additional supplemental item data

## Supplemental Item Details

The **item** category provides a **suplData** (supplemental data) tag in which to place non-conformal data that supports the procurement process, but is not easily accommodated by other more specific tags. In the example below, the generic nomenclature data is supplemented by the descriptive data included after it in the **suplData** tags.

```
- <item>
  <clin exhibit="B0037">0003</clin>
  <noun>REWORK, WIDGET</noun>
  <quantity uoi="LT">1</quantity>
  <unitPrice currency="USD">2274</unitPrice>
  <suplData>Maintenance performed on engineering</suplData>
  <suplData>units to make ready for shipment under</suplData>
  <suplData>terms of contract.</suplData>
</item>
```

## Internal and Customer Approvals

Approval tags may be added at various stages of document processing. Internal approvals are optional, and there can be more than one required. When combined with the `<copyTo:mustApprove>` tag elements, the data to support a workflow application is provided. The example below shows two separate internal approvals. Note that the government **inspection** tag has been collapsed for the moment.

```
= <approval>
+ <inspection cqa="S" acceptance="S" approvAction="Approved"
  approvDate="01/14/2001" transCode="30012003311">
  <internalOk approvAction="Approved" approvDate="01/11/2001"
  title="Project Mgr" phone="888-555-1212 Ext432">Ed
  Samuels</internalOk>
  <internalOk approvAction="Approved" approvDate="01/12/2001"
  title="Lead QA" phone="888-555-1212 Ext222">Dave
  Smith</internalOk>
</approval>
```

Looking at the customer approval (collapsed in the example above) it is immediately apparent that more information is both required and provided. One additional tag is the **entity**, which identifies the organization that the government inspector represents. The `transCode` is the outcome of an electronic approval

via SEPS (EDI-856) or WAWF. The **inspectMsg**, shown here, would more likely be used to cite the reason for a shipment being rejected or not processed.

```
- <inspection cqa="S" acceptance="S" approvAction="Approved"
  approvDate="01/14/2001" transCode="30012003311">
  <inspectMsg>Shipment accepted after inspection</inspectMsg>
- <inspector name="M Davis" title="QAS" phone="888-555-1212">
- <entity entityCode="S0504A">
  <orgName>DCMC-SAN DIEGO</orgName>
  <address subAddress="Suite 200" city="San Diego" state="CA"
    zipcode="92123">5220 Daggett Street</address>
</entity>
</inspection>
```

**Category Tag: <approval>**

Tag	Parameters	Valid Values	Purpose
< inspection >		<inspector>	Email address
	<b>cqa</b>	S, D,	Location of Contract Quality Assurance performance: Source, Destination or Neither
	<b>acceptance</b>	S, D, N	Location of shipment acceptance activity: Source, Destination or Neither
	<b>approvAction</b>	Approved, Rejected, No Action	Shipment was approved Shipment was rejected No action was taken
	approvDate		Date <b>approvAction</b> was taken
	transactCode		Transaction code associated with electronic approvals
< inspectMsg >			Cause of Rejection or No Action
<inspector>		<organization>	Organization to which inspector belongs
	name		Name of the inspector
	title		Inspector's title
	phone		Inspector's commercial telephone number
<internalSig>			Individual making internal approval
	<b>approvAction</b>	Approved, Rejected, No Action	Shipment was approved Shipment was rejected No action was taken
	<b>approvDate</b>		Date <b>approvAction</b> was taken

	<b>title</b>		Internal approver's title
	<b>phone</b>		Telephone number

## Freight Information

The freight tag records cartage details about the shipment itself, including container dimensions, freight carrier, charges, and tracking numbers.

```

=< freightDetails >
=< dimensions >
  < containers > 3 </ containers >
  < weight units = "pounds" > 17 </ weight >
  < volume units = "cu-feet" > 4 </ volume >
</ dimensions >
< charges currency = "USD" > 28.90 </ charges >
< carrier trackNum = "1Z064X002332423342"
  service = "2nd Day Air" > UPS
</ carrier >
</ freightDetails >

```

### Category Tag: < freightDetails >

Tag	Parameters	Valid Values	Purpose
<dimensions>		<containers>	Container quantity, size and weight
	<b>weight</b>		Total weight of the shipment
	wtUnits	<i>pounds, etc.</i>	Unit of weight measurement
	<b>volume</b>		Combined volume of the shipment
	cuUnits	<i>Cu-feet, etc.</i>	Unit of volume measure
<charges>			Charges for shipping/freight
	<b>currency</b>	<i>USD, etc. per ISO 4217</i>	Currency <b>currency</b> is expressed in
<carrier>			Name of the shipping company
		<trackingNum*>	Shipment Tracking Number
<trackingNum>			Shipment Tracking Number
	<b>serviceType</b>		Type of service (ie. "2 <sup>nd</sup> Day Air")

## Reusable Tags

These tags are used in a number of different categories.

Tag	Parameters	Valid Values	Purpose
<genericAddress>	<emailAddress> or		Physical address
	<postalAddress>		Email address
<emailAddress>			Email address
	name		Name to be included in address
<postalAddress>	<organization>		
	<b>name</b>		Name to be included in address
<entity>		<organization>	
	<b>entityCode</b>		CAGE or DODAAD code for entity
<organization>		<orgName>	Identity of organization
		<address>	Location of organization
<orgName>			Name of the organization
	subOrg		Name of division or other sub entity
<address>			Street address
	subAddress		Buiding, suite, mail-stop, etc
	<b>city</b>		Name of the city
	<b>state</b>		State/Province Code
	<b>zipcode</b>		Zip or other postal code

# APPENDIX

## Contact

Further information about this proposed standard may be obtained by contacting the following individual. Comments and suggestions regarding its evolution and application are most welcome.

Gregory Tsiknas, CTO  
Mil-Pac Technology, Inc.  
San Diego, California  
GTsiknas@milpac.com  
858-495-1400

## Industry Review Panel

The authors would like to extend considerable appreciation to the industry experts that reviewed this draft proposal and offered their invaluable advice.

Dan Cagliani BAE Systems Somerset, New Jersey	Bill Troum Honeywell Defense Avionics Albuquerque, New Mexico
Curt Garcia, CPCM Raytheon Company Tewksbury, Massachusetts	Mike Werdal Litton Data Systems Moorpark, California
Rod Haughwout Lockheed Martin Corporation Enterprise Information Systems	Kevin Wood Litton Guidance Systems Salt Lake City, Utah
Ella Mason General Electric Aircraft Engines Struther Field, Kansas	

## Definition of Schema

```

<?xml version="1.0" ?>

<!--File: dtd-dd250-05.xml
Purpose: DD250 Form
Version: 1.5 2001-03-09
Location: http://www.milpac.com/specs
-->

<!--DD250 DTD -->

<!DOCTYPE dd250 [

<!ELEMENT document (coverSheet, shipmentDetails, freightDetails, item+,approval)>

<!-- ===== -->
<!-- cover: Descriptive information about document -->
<!-- ===== -->

<!ELEMENT coverSheet (returnAddress,copyTo*,notes*)>
<!ATTLIST coverSheet
  refNumber ID #REQUIRED
  docForm CDATA #IMPLIED
  docStatus (New|Correction) "New"
  docVersion CDATA #FIXED "2.0"
  salesOrder CDATA #IMPLIED
  sequence CDATA #IMPLIED
  author CDATA #REQUIRED
  date CDATA #REQUIRED
  status (Draft|InProgress | Submitted | Approved | Closed) "InProgress"
>

<!ELEMENT returnAddress (genericAddress) >

<!ELEMENT copyTo (genericAddress) >
<!ATTLIST copyTo
  mustApprove (Yes | No) "No"

```

```

>
  <!ELEMENT genericAddress (postalAddress|emailAddress) >

  <!ELEMENT emailAddress (#PCDATA)>
  <!ATTLIST emailAddress
    name CDATA #IMPLIED
  >

  <!ELEMENT postalAddress (organization)>
  <!ATTLIST postalAddress
    name CDATA #REQUIRED
  >

  <!ELEMENT notes (#PCDATA)>
  <!ATTLIST notes
    noteBy CDATA #REQUIRED
    date CDATA #REQUIRED
  >

<!-- ===== -->
<!-- shipmentDetails: Shipment Level Details -->
<!-- ===== -->

<!ELEMENT shipmentDetails (contract, shipmentNum, invoice, shipDate,
  transportation, parties, acceptance)>

  <!ELEMENT contract (#PCDATA)>
  <!ATTLIST contract
    ordernum CDATA #IMPLIED
    subContract CDATA #IMPLIED
  >

  <!ELEMENT shipmentNum (#PCDATA)>
  <!ATTLIST shipmentNum
    isFinal (Yes | No) "No"
  >

  <!ELEMENT shipDate (#PCDATA)>
  <!ATTLIST shipDate
    isEstimated (Yes | No) "No"

```

```

>
<!ELEMENT invoice (#PCDATA)>
<!ATTLIST invoice
  invdate CDATA #IMPLIED
>

<!ELEMENT acceptance (#PCDATA)>
<!ATTLIST acceptance
  acceptPoint (S | D) "S"
  fob (S | O | D) "S"
  cqa (S | D | N) "S"
  acceptMeth (GovtRep|FastPay|EDI|WAWF) "GovtRep"
>

<!ELEMENT transportMode (#PCDATA)>
<!ATTLIST transportMode
  tcn CDATA #IMPLIED
  gbl CDATA #IMPLIED
>

<!ELEMENT parties (prime,shipFrom,adminOfc,payOfc,shipTo,markFor)>

  <!ELEMENT prime (entity)>
  <!ELEMENT shipFrom (entity)>
  <!ELEMENT adminOfc (entity)>
  <!ELEMENT payOfc (entity)>
  <!ELEMENT shipTo (entity)>
  <!ELEMENT markFor (entity|markForInfo)>

  <!ELEMENT entity (organization)>
  <!ATTLIST entity
    code CDATA #REQUIRED
    subEntity CDATA #IMPLIED
  >

  <!ELEMENT organization (orgName, address)>

  <!ELEMENT orgName (#PCDATA)>
  <!ATTLIST orgName
    subOrg CDATA #IMPLIED
  >

  <!ELEMENT address (#PCDATA)>

```

```

<!ATTLIST address
  subAddress CDATA #IMPLIED
  city CDATA #REQUIRED
  state CDATA #REQUIRED
  zipcode CDATA #REQUIRED
  >

<!ELEMENT markForInfo (mfTextLine,mfTextLine*,mfTextLine*,
  mfTextLine*,mfTextLine*)>
<!ATTLIST markForInfo
  code CDATA #IMPLIED
  >

<!ELEMENT mfTextLine (#PCDATA)*>

<!-- ===== -->
<!-- item: Line item(s) being shipped -->
<!-- ===== -->

<!ELEMENT item (clin,noun,nsn,partNum,quantity,unitPrice,serialNums,accounting,
  suplData*)>

  <!ELEMENT clin (#PCDATA)>
  <!ATTLIST clin
    exhibit CDATA #IMPLIED
  >

  <!ELEMENT noun (#PCDATA)>
  <!ELEMENT nsn (#PCDATA)>

  <!ELEMENT partNum (#PCDATA)>
  <!ATTLIST partNum
    mfrCAGE CDATA #IMPLIED
  >

  <!ELEMENT quantity (#PCDATA)>
  <!ATTLIST quantity
    uoi CDATA "EA"
  >

  <!ELEMENT unitPrice (#PCDATA)>
  <!ATTLIST unitPrice
    currency CDATA "USD"

```

```

>
<!ELEMENT serialNums (sn*,snRange*)>
  <!ELEMENT sn (#PCDATA)>
  <!ELEMENT snRange (#PCDATA)* >
  <!ATTLIST snRange
    first CDATA #IMPLIED
    last CDATA #IMPLIED
  >

<!ELEMENT accounting (acrn*,milstrip*)>

  <!ELEMENT acrn (#PCDATA)>

  <!ELEMENT milstrip (#PCDATA)>
  <!ATTLIST milstrip
    quantity CDATA #IMPLIED
  >

<!ELEMENT suppData (#PCDATA) >

<!-- ===== -->
<!-- approval(s): Internal signoffs and customer approvals  -->
<!-- ===== -->

<!ELEMENT approval (inspection,internalOk*)>

  <!ELEMENT inspection (inspector,inspectMsg*) >
  <!ATTLIST inspection
    cqa (S | D) "S"
    acceptance (S | D) "S"
    approvAction (Approved | Rejected | NoAction) "NoAction"
    approvDate CDATA #REQUIRED
    transactCode CDATA #IMPLIED
  >

  <!ELEMENT inspector (entity)>
  <!ATTLIST inspector
    name CDATA #REQUIRED
    title CDATA #REQUIRED
    phone CDATA #REQUIRED
  >

```

```
<!ELEMENT internalOk (internSig,inspectMsg*) >
<!ELEMENT internSig (#PCDATA)>
<!ATTLIST internSig
  approvAction (Approved | Rejected | NoAction) "NoAction"
  approvDate CDATA #REQUIRED
  title CDATA #REQUIRED
  phone CDATA #REQUIRED
>

<!ELEMENT inspectMsg (#PCDATA)>

<!-- ===== -->
<!-- freightDetails: Freight Dimensions, Charges, Tracking -->
<!-- ===== -->

<!ELEMENT freightDetails (dimensions,charges,carrier)>

  <!ELEMENT dimensions (containers,weight,volume)>

    <!ELEMENT containers (#PCDATA)>
    <!ELEMENT weight (#PCDATA)>
    <!ATTLIST weight
      units CDATA #FIXED "pounds"
    >
    <!ELEMENT volume (#PCDATA)>
    <!ATTLIST volume
      units CDATA #FIXED "cu-feet"
    >

  <!ELEMENT charges (#PCDATA)>
  <!ATTLIST charges
    currency CDATA #FIXED "USD"
  >

  <!ELEMENT carrier (#PCDATA)>
  <!ATTLIST carrier
    trackNum CDATA #REQUIRED
    service CDATA #IMPLIED
  >
```

]> <!--End of DD250 DTD Definition-->

## Sample DD250 Document

```

<?xml version="1.0" ?>

<!--
File: dtd-dd250-02.xml
Purpose: DD250 Form
Version: 0.4 2001-01-29
Location: http://www.milpac.com/specs
-->
- <!--
=====
----- Sample DD250 Document -----
=====
-->
- <dd250>
- <coverSheet refNumber="TEST-XML-DD250-05" docType="DSD-250"
      docStatus="New" salesOrder="DLA900-01-A-TEST-M237"
      sequence="MPT0005" docVersion="2.0" author="D Johnson"
      date="12/08/2000" status="Approved">
  <returnAddress>DJohnson@milpac.com</returnAddress>
- <copyTo mustApprove="No">
  <emailAddress name="Lynn Carter">LCarter@milpac.com</emailAddress>
  </copyTo>
- <copyTo mustApprove="No">
  <emailAddress>Accts-Recv@milpac.com</emailAddress>
  </copyTo>
- <copyTo mustApprove="No">
  <emailAddress>DD250s-File@milpac.com</emailAddress>
  </copyTo>
  <notes noteBy="D Johnson" date="12/11/2000">This is a sample DD250
    document created by DD-FormStation.</notes>
  <notes noteBy="G Tsiknas" date="12/11/2000">This is an XML
    representation of a sample DD250 using Mil-Pac's proposed
    schema for interchange of DD250 documents.</notes>
  </coverSheet>
- <shipmentDetails>
  <contract ordernum="M237">DLA900-01-A-TEST</contract>
  <shipmentNum isFinal="No">MPT0005</shipmentNum>
  <shipDate isEstimated="Yes">2001JAN14</shipDate>
  <invoice invdate="1/14/2001">M01-0023525</invoice>
  <transportMode tcn="V003301007G0123" gbl="235255255">5</transportMode>
  <acceptance acceptPoint="S" cqa="S" fob="S" acceptMeth="Inspection" />

```

```

- <prime entityCode="1HLD9">
  <orgName subOrg="Network Services Division">
    Mil-Pac Technology</orgName>
    <address subAddress="Suite 227" city="San Diego" state="CA"
      zipcode="92123">3914 Murphy Canyon Road</address>
  </prime>
- <shipFrom entityCode="1HLD9">
  <orgName>Mil-Pac Technology</orgName>
  <address city="San Diego" state="CA" zipcode="92123">
    3914 Murphy Canyon Road</address>
  </shipFrom>
- <shipFrom entityCode="1HLD9">
  <orgName>Mil-Pac Technology</orgName>
  <address city="San Diego" state="CA" zipcode="92123">
    3914 Murphy Canyon Road</address>
  </shipFrom>
- <shipTo entityCode="N00014">
  <orgName>OFFICE OF NAVAL RESEARCH</orgName>
  <address subAddress="BALLSTON CENTRE TOWER ONE"
    city="ARLINGTON" state="VA" zipcode="22217-5660">
    800 NORTH QUINCY STREET</address>
  </shipTo>
- <adminOfc entityCode="S0504A">
  <orgName>DCMC PHOENIX</orgName>
  <address subAddress="TWO RENAISSANCE SQUARE, SUITE 400"
    city="PHOENIX" state="AZ" zipcode="85004-4424">
    40 N. CENTRAL AVENUE</address>
  </adminOfc>
- <payOfc entityCode="SC1002">
  <orgName subOrg="DFAS-CO-JWD/DPRO WEST DIVISION">
    DFAS - COLUMBUS CENTER</orgName>
    <address city="COLUMBUS" state="OH" zipcode="43218-2511">
      P.O. BOX 182311</address>
  </payOfc>
- <markFor>
  <mfTextLine>Receiving Officer</mfTextLine>
  <mfTextLine>Non-Milstrip</mfTextLine>
  <mfTextLine>TP 3 Rating DOA7</mfTextLine>
  <mfTextLine>ACR: AB</mfTextLine>
  </markFor>
  </shipmentDetails>
- <item>
  <clin exhibit="A007">0001</clin>
  <noun>WIDGET</noun>
  <nsn>1112-01-233-4443</nsn>
  <partNum mfrCage="1HLD9">WDG-020550-223</partNum>

```

```

<quantity uoi="EA">12</quantity>
<unitPrice currency="USD">1295</unitPrice>
- <serialNums>
  <sn>223-00003</sn>
  <sn>223-00005</sn>
  <sn>223-00009</sn>
  <sn>223-00012</sn>
  <serNumRange first="223-00021" last="223-00028" />
</serialNums>
<acrn>AB</acrn>
<milstrip alloc="4">23908238289234424</milstrip>
<milstrip alloc="8">55902352522222421</milstrip>
</item>
- <item>
  <clin exhibit="B005">0002AA</clin>
  <noun>CONNECTOR, WIDGET</noun>
  <nsn>1112-01-233-4003</nsn>
  <partNum mfrCage="1HLD9">WDG-020550-887</partNum>
  <quantity uoi="EA">20</quantity>
  <unitPrice currency="USD">192</unitPrice>
  <acrn>AB</acrn>
  <milstrip alloc="12">23908238289234424</milstrip>
  <milstrip alloc="8">55902352522222421</milstrip>
</item>
- <item>
  <clin exhibit="B005">0002AB</clin>
  <noun>MAINTENANCE, WIDGET</noun>
  <partNum mfrCage="1HLD9">MNT-020550-001</partNum>
  <quantity uoi="LT">1</quantity>
  <unitPrice currency="USD">27244</unitPrice>
  <acrn>AC</acrn>
  <milstrip>23908238289234424</milstrip>
</item>
- <item>
  <clin exhibit="B027">0003</clin>
  <noun>REWORK, WIDGET</noun>
  <quantity uoi="LT">1</quantity>
  <unitPrice currency="USD">2274</unitPrice>
  <suplData>Maintenance performed on engineering</suplData>
  <suplData>units to make ready for shipment under</suplData>
  <suplData>terms of contract.</suplData>
</item>
- <approval>
- <inspection cqa="S" acceptance="S" approvAction="Approved"
  approvDate="01/14/2001" transCode="30012003311">
  <inspectMsg>Shipment accepted after inspection</inspectMsg>

```

```

- <inspector name="M Davis" title="QAS" phone="888-555-1212">
- <entity entityCode="S0504A">
  <orgName>DCMC-SAN DIEGO</orgName>
  <address subAddress="Suite 200" city="San Diego" state="CA"
    zipcode="92123">5220 Daggett Street</address>
  </entity>
</inspector>
</inspection>
<internalOk approvAction="Approved" approvDate="01/11/2001"
  title="Project Mgr" phone="888-555-1212 Ext432">Ed Samuels</internalOk>
<internalOk approvAction="Approved" approvDate="01/12/2001"
  title="Lead QA" phone="888-555-1212 Ext222">Dave Smith</internalOk>
</approval>
- <freightDetails>
- <dimensions>
  <containers>3</containers>
  <weight units="pounds">17</weight>
  <volume units="cu-feet">4</volume>
</dimensions>
  <charges currency="USD">28.90</charges>
  <carrier trackNum="1Z064X002332423342" service="2nd Day Air">UPS</carrier>
</freightDetails>
</dd250>

```